



GLENLOLA
COLLEGIATE
SCHOOL
BANGOR

AS AND A LEVEL SUBJECT CHOICES 2026

Excellence through commitment, contribution and caring

Contents

Welcome, Introduction and Careers Department	3
The Curriculum in Years 13 and 14	4
Advice for Making Subject Choices	5
AS and A2 Level Subject Nominations Guidance	6
Subjects Offered at AS/A2 Level	6
Senior School in Glenlola Collegiate School	7
Useful Careers Websites	8
Criteria for Entry into Senior School	9-10
GCSE Criteria for AS Level Subjects	11

Subject Pages

These pages give some information regarding the content of the various subjects and suggestions about career opportunities using them. The lists are only starting points. You should be able to find out more from subject teachers.

Art and Design	12
Biology	13
Business Studies	14
Chemistry	15
Digital Technology	16
English Literature	17
French	18
Geography	19
Government and Politics	20
Health and Social Care	21
History	22
Life and Health Sciences	23
Mathematics	24

Moving Image Arts	25
Music	26
Nutrition and Food Science	27
Physical Education	28
Physics	29
Psychology	30
Religious Studies	31
Sociology	32
Spanish	33
Technology and Design	34
Theatre Studies	35
Collaborative Courses (SERC)	36

Important Dates

Parental Consultation	Thursday 15 January 2026
Subject Choice Interviews	w/c Monday 2 February 2026
Options Event	Wednesday 4 February 2026
Date for submitting AS Level subject choices	Friday 20 February 2026



In August when pupils receive their GCSE results, interviews are held to finalise subject choices.

Welcome

Entry into Senior School represents a new and exciting stage of your educational journey.

At Glenlola Collegiate School, our high standards of teaching, excellent pastoral care and experienced Careers team will help you develop both personally and academically.

Senior School introduces a different style of school life. Pupils are provided with opportunities to expand their interests and activities and are given time to develop socially. Our extensive curriculum offer allows pupils entering Senior School to have both breadth and flexibility when making their subject choices.

We warmly invite you to consider a place in Senior School in Glenlola Collegiate; an exciting, supportive and rewarding environment in which to reach your potential.



Introduction

This document, along with other relevant information provided by the Careers Department, will help guide you through the process of making your choices for the next stage of your education.

It contains information about the subjects available at AS and A2 Level in Glenlola Collegiate so that you can be informed about what each subject involves before you make your choices.

You should choose **3 or 4 subjects** which are required for your university courses or career path, subjects which you enjoy and in which you are likely to achieve top grades.

AS Level examinations taken at the end of Year 13 represents a substantial weighting in terms of the overall A Level, and AS examination results must be declared on UCAS applications. AS Level results are also used to inform predicted A Level grades.

Careers Department

The Careers Department in Glenlola works to enable you to make informed decisions about your next steps. During the Middle School LTC³ careers programme, we have discussed possible future pathways in apprenticeships, Higher Level Apprenticeships and Further and Higher Education.



At the start of February you will have an individual subject choice/careers interview with Careers staff. This, along with the Options Event and the Year 12 Parental Consultation afternoon, are used to provide support, advice and guidance for future plans. In addition, careers interviews taken by Careers Advisers from the NI Careers Service are ongoing.

Decisions about AS Level choices can impact upon options in Further and Higher Education and future career direction.

Therefore, it is important that you continue to explore the subjects and grades required for progressing and have an understanding of how the choices you make now can have an impact in the longer term.

We are here to support pupils through the process of realising their career pathway and making informed decisions for A level subject choice, through to selecting a university or college course or vocation in years 13 and 14.



Unifrog is an online careers platform where pupils can research future options, explore MOOCs and record their skills. Pupils can access a comprehensive careers and subjects library and can conduct university course searches. All pupils are registered to use the platform and have been given guidance on how they can make use of it during Careers classes.

We hope that you find the guidance provided by the Careers department useful at this important time. We are always available to speak to and we wish you all the best in selecting your AS Level subjects choices.

The Curriculum in Years 13 and 14

The subject choices you make for year 13 are an important decision that will require detailed research and careful consideration.



Students will study 3 or 4 subjects at AS Level in Year 13.

Each subject is timetabled for **9 periods** across the **two-week timetable**.

AS/A Level studies are more difficult and demanding than GCSEs. You will be expected to work with greater independence, display higher levels of personal organisation, self-motivation and maturity and develop a broader range of skills and qualities.

Parents and pupils should be aware that whilst School offers access to a range of subjects in Senior School, these courses will only be delivered where viable.

As part of our commitment to meeting the 'Entitlement Framework' we offer a number of applied AS Level courses. These courses are work related and may be more appropriate to those pupils who intend to pursue a related career. They should not be regarded as easier than traditional A Levels as success in them requires pupils to be well organised and to meet deadlines as a larger proportion of marks available are awarded for coursework.

As part of the Department of Education's collaboration initiative through the Bangor Learning Partnership, some subjects may be delivered by other local schools or SERC (see page 36 for information on SERC subjects).

As well as studying your chosen subjects, you will take part in the Enrichment Curriculum and work-related learning. You may also choose to participate in optional extra-curricular activities. These will complement your studies and help develop a wide range of personal skills and interests, which are necessary for future study and the world of work.

Enrichment Curriculum and General Studies

In Senior School, all pupils complete modules in:

- Study Skills
- LLW
- Careers

You can also become involved with other initiatives. Some of these include SistersIn, Young Enterprise, British Sign Language, teaching and volunteering programmes and Bar Mock Trial.

Careers

The Careers programme in Senior School aims to ensure that pupils understand their strengths, recognise the importance of developing skills, consider the latest LMI and are aware of the requirements for applying to Further and Higher Education.

Work placements and mock interviews are organised along with presentations from Higher Education institutions and employers. Early applications (Oxbridge, Medicine, Veterinary Science and Dentistry) are provided with extra assistance.

All pupils will be expected to take part in the programme of work experience during Year 13. Relevant work experience can be a requirement for certain university courses and it is valuable preparation for the world of work.

Pupils are encouraged to apply for and complete relevant schemes which can be offered by universities and organisations.

Supervised Study

Your timetable in Senior School will include Supervised Study periods. Private study demands considerable self-discipline; time is precious and if squandered it cannot be recalled. You are strongly advised to take advantage of the excellent study facilities offered to Senior School pupils. At the beginning of Year 13 guidance will be given on the use of private study.



Skills

Skills will help you succeed in your chosen career. A pupil's education and experience may make them eligible to apply for a job but, to be successful in most roles, they will need employability skills that they are likely to develop over time.



The Northern Ireland Skills Barometer provides a detailed understanding of the skill requirements for the Northern Ireland economy, up to 2030. The research analyses where the skills gaps are currently, where they are emerging and where they are likely to emerge over the longer term (**Skills in Demand**).

Advice for Making Subject Choices

Success at A Level depends not only on hard work, but also on how well-equipped you are to cope with the subjects you choose. You should choose subjects which are required for your university courses or career path, subjects which you enjoy and are likely to achieve top grades in. We recommend that you consider the following:

GCSE Results



In order to ensure that you have acquired sufficient knowledge and skills to meet the demands of your chosen AS Level subjects and to secure a place in those subjects in Year 13, it is often a requirement that you have successfully studied and achieved a sufficiently high grade in the subject at GCSE. Many university courses require particular subjects at A Level and in many cases you will need to have studied those subjects at GCSE to be able to go on to study them at A Level. **GCSE English Language and Mathematics at grade C or better are required for entry to university.**



University Entry Requirements

Requirements for degree courses can vary widely so in-depth research is essential. Pupils should choose subjects which are required for their chosen degree. UCAS applicants who intend to apply for high demand courses may consider studying 4 subjects at AS level, provided their GCSE profile supports this.



Career Ideas

Choose subjects you need in order to facilitate your future pathways. If you need advice on choosing the right course to suit your career aspirations you should speak to your parents/guardians, to staff in the Careers department and to the relevant Head of Department.



Ability

Consider which subjects you do well in. Evidence will come from recent assessments, tracking and feedback from your teachers. Think about your interests and long-term aims.

Research

It is vital that you carry out careful research at this stage to ensure the most appropriate choice of subjects at AS Level. You will spend 9 periods per fortnight studying each of your chosen subjects, so it is important that you take time to find out all you can about them, before you make your choices. You should:



- Find out as much as possible about the subjects being offered. Do not assume that the courses are just a continuation of GCSE - most AS/A2 Level subjects will be very different at this higher level.
- Consult with Careers staff.
- Discuss your subject choices with family and friends.
- Talk to your subject teachers as they have the correct information about all the specifications.



Every pupil must check the **UCAS website** for individual university course requirements in terms of numbers of subjects to be taken and preferred subject patterns.

Extra-curricular Activities



In addition to the academic side, you should also consider your non-academic activities both inside and outside of school. It is important for you to realise that prospective employers and university tutors attach a great deal of importance to what students do in their spare time. A-Level grades will only give an indication of your academic ability, but hobbies and other activities provide an insight into your personality and personal qualities. You could be involved in sport, community work, volunteering, get involved in House activities, join the Student Council, Eco-Council or join the choir etc. Think about how engagement in extra-curricular activities can enhance your connection with school, in addition to how they will help further develop your skills and qualities.

AS and A2 Level Subject Nominations Guidance

- Pupils should nominate 3 or 4 subjects **in order of preference** on the subject choice form (a link for this online form will be emailed to parents/guardians).
- At the end of the year, you will take modular examinations in all or some of them, potentially gaining an AS Level qualification in all or some.
- English examinations boards will award a grade based on the final examinations at the end of 2 years study.
- To enable a much wider choice of university courses it is strongly recommended that three of these subjects will be continued into Year 14.
- The final A Level grades (A* to E for pass standard, with U for fail) will be based on the sum of AS (40%) and A2 (60%) module marks in each subject studied through CCEA.
- **These nominations should be made in full consultation with School staff and parents/guardians.**

Please note:

- We will try to provide the combination of subjects chosen by pupils, but we cannot guarantee that this will happen. If there are timetabling difficulties with a chosen combination of subjects, it will be necessary to discuss this with you and you will have to review your choices.
- Subjects may only operate if there is a viable number of pupils. If there are insufficient numbers in any course, it may not run. Where numbers choosing a particular subject are small it may be necessary for the course to be taken in collaboration with another school in the Bangor Learning Partnership.
- If a subject is over-subscribed, the individual subject criteria and order of preference may be used to select pupils.
- If you change your mind before you start your AS Level course, it may be possible to accommodate your new choice, subject to places being available in the chosen course and the change fitting within the option blocks.
- If you start an AS Level course in September and wish to change courses, you must make this decision **within the first 3 weeks**. It may be possible to accommodate your new choice, **subject to places being available** in the chosen subject.

AS and A Level Subjects Offered Through English/Welsh Examination Boards

In England, there is a requirement that all A Level courses are linear. This means that, where AS examinations are available, results **do not** contribute to the overall result at A2 Level. Therefore, pupils taking a subject offered through an English/Welsh examination board will be considered as committing to a two-year full A Level course. If you are considering choosing one of these subjects you should speak to the relevant Head of Department to find out how this will impact the subject as this will vary according to examination board.



Subjects currently using English/Welsh examination boards are Psychology (AQA), Sociology (WJEC), PE (WJEC) and Theatre Studies (Edexcel).

Subjects Offered at AS/A2 Level

In order to widen your options, there are a number of new subjects available for study at A level. However, we do not recommend that you select more than TWO subjects that you have not studied at GCSE. Glenlola Collegiate currently offers the following subjects for study at AS/ A2 Level:



*Applied Subjects

Art and Design*	Government and Politics	Physical Education*
Biology	Health and Social Care*	Physics
Business Studies	History	Psychology
Chemistry	Life and Health Sciences (Single Award)*	Religious Studies
Digital Technology*	Mathematics	Sociology
English Literature	Moving Image Arts*	Spanish
French	Music*	Technology and Design
Geography	Nutrition and Food Science	Theatre Studies*

BTEC Level 3 qualifications are also available in Engineering, Hospitality and Sports and Exercise Science through SERC. Please see page 36 for information on these. Only 1 subject can be studied at SERC.

Senior School in Glenlola Collegiate School

We have a large and thriving Senior School at Glenlola Collegiate School, a place where enthusiastic and talented 16 to 18 year old girls rise to the new challenges and opportunities that this stage of their education provides.



Through the wide range of courses we offer, the School endeavours to meet the needs of all our Senior School pupils.

Senior School introduces a different style of school life. Girls are provided with opportunities to expand their interests and activities and are given time to develop socially. With a healthy balance of academic work and social activity, it can be both rewarding and fun.

Staying on into Senior School, or entering Year 13 from another school, enables you to:

- Take responsibility for your own learning to become an independent learner
- Achieve academic success
- Have access to a wide range of subjects
- Have access to an extensive extra-curricular programme
- Receive excellent Careers advice and guidance with focused UCAS preparation

While we strongly encourage our Year 12 pupils to return to School to pursue their A Level studies, applications from pupils who wish to transfer to Glenlola Collegiate School from other schools are most welcome.

Advice for Senior School

A Level Demands

AS/A Level work is significantly more demanding than GCSE level and the work is different from what you have done before. It can take some time to come to terms with this when starting Senior School. Teachers will be expecting more of you and doing less for you.



Organisation

You will have to learn how to organise yourself and the time available to ensure you make the best use of the opportunities available and prepare yourself effectively for AS/A Levels. You should:

- plan the effective use of your private study time
- ensure that the reading and writing needed for an essay or another project is done on time
- ensure that the revision for tests and examinations is properly planned and carried out
- organise your own note-making and filing systems
- make the time needed for the wider reading and studying that are essential to succeed in any AS/A Level course



Different Opportunities and Responsibilities

Being in Senior School will bring you more opportunities to meet your own year group, to spend time together in the Senior School Centre, to study quietly in the study areas, to perform important duties, take on positions of responsibility and to set an example to the younger pupils in the school.



All Year 14 students have the opportunity to serve as Prefects in order to develop their leadership skills. Senior Prefects and House Officials are chosen to be part of the Pupil Leadership Team by a process of application, election and interview.

Making Decisions

During your 2 years in Senior School you will have to make some very important decisions about your future.

- Where are you going to go when you leave school and what are you going to do?
- Will you apply for a course in Higher Education and, if so, what course?
- Will you look for a job after AS/ 'A' Levels and, if so, where?
- If you are offered a job before you take 'A' Levels, what should you do?





Useful Careers Websites

www.unifrog.org

This online platform brings available information into one platform that helps pupils to research relevant careers and courses.

www.ucas.com

This is the website for application to UK universities. It gives information on available courses, subject requirements for courses of interest and the current range of third level education options available.

www.nidirect.gov.uk/articles/options-after-year-12

This includes information to help you understand your next steps for the end of Year 12.

www.nidirect.gov.uk/campaigns/careers

The NI Careers Service website provides comprehensive information on a wide range of careers, employment, apprenticeships, labour market information and higher education.

www.icould.com

This website can be used for career ideas, first-hand information and inspiration from access to more than 1000 personal video stories and detailed job information.

www.cao.ie

Information about applying to universities and other Higher Education Institutions in the Republic of Ireland.

www.careersportal.ie

Provides information on career planning, work and employment.

www.prospects.ac.uk

A graduate careers website which gives information on the opportunities open to you when you graduate.

www.informedchoices.ac.uk

A number of high demand universities (commonly referred to as the 'Russell Group') give preference to certain A level subjects when making offers for their courses. A list of these subjects can be accessed on this website.

www.whatuni.com

This includes reviews from students at universities and HE colleges all over the UK, sharing their thoughts on their university experience.

www.thecompleteuniversityguide.co.uk

This includes university league tables and rankings and guidance and support for every stage of your journey to university, from choosing a course and university to researching funding and accommodation.

<https://www.careerpilot.org.uk/>

This website aims to increase the progression of adults and young people to higher level study through providing online, impartial information and support about all progression routes.

www.universitycompare.com

Compare courses, read personal statement examples, book open days and requests prospectuses.

NI Skills Barometer

The Skills Barometer is a tool developed by the Ulster University Economic Policy Centre that projects the skills needed by new workers in Northern Ireland (NI) over the coming decade.

www.qub.ac.uk

Queen's University website

www.ulster.ac.uk

University of Ulster website

<https://www.serc.ac.uk/>

SERC website

<https://www.belfastmet.ac.uk/>

Belfast Met website

www.studentfinancenai.co.uk

Higher education finance information.

Details of examination specifications for each subject can be found on the relevant examination board websites:

CCEA:

www.ccea.org.uk

AQA:

www.aqa.org.uk

WJEC:

www.wjec.co.uk

Edexcel:

<https://qualifications.pearson.com/en/home.html>

Criteria for Entry into Senior School

The demands of Senior School are best met by pupils who have achieved a GCSE profile that adequately equips them for A Level study. The Board of Governors will consider applications of those pupils who will make a positive contribution to the life of Glenlola Collegiate School. However, places cannot be offered in situations where resources or facilities would be prejudiced. All pupils will sign their applications to Senior School and by doing so agree to adhere to the School Rules concerning behaviour, attitude, attendance and the wearing of school uniform.

Entry into Year 13: The minimum criteria for entry to Year 13 are listed below:

GCSE Examination Performance

Under a scoring system of:

GRADE	POINTS
A*	4
A	3
B	2
C*	1.5
C	1

- A total of **12 or more points** are required at GCSE Level.
- These passes should include at least a **C grade in both English and Mathematics**.
- In special circumstances it is at the discretion of the Board of Governors to consider offering places to pupils who have achieved less than 12 GCSE points.
- In cases where special circumstances apply, parents/guardians should provide medical and/or other reports in support of their application.

Individual Subject Requirements

- For any subject they wish to take to A Level, pupils will be expected to meet the GCSE grade and other requirements specified for that subject.
- For most subjects you wish to take to A Level, you will normally be expected to have achieved at least a **'B' grade at GCSE**, except where prior study is not a prerequisite to taking the subject in Senior School.
- In some subjects, it is advisable that an 'A' grade be achieved before embarking on A level study.
- **Page 11** details the GCSE grade and other requirements for entry into each AS subject.

3 or 4 AS Level Courses

- Pupils are expected to study a minimum of 3 AS subjects.
- The majority of pupils will study 3 AS Levels.
- If choosing 4 AS Levels, ideally the fourth subject should be a contrasting/ broadening one.
- Pupils should note that a minimum of 20 GCSE points is required if they wish to study 4 AS subjects.

4 AS levels	<ul style="list-style-type: none"> • A minimum of 20 GCSE points. • Individual entry requirements should be met for each subject.
3 AS levels	<ul style="list-style-type: none"> • A minimum of 12 GCSE points. • Individual entry requirements should be met for each subject.

Should I choose 3 or 4 subjects in Year 13?



This very much depends on your personal agenda and your anticipated GCSE results. Choosing 4 AS Levels gives you more flexibility when choosing which 3 to continue with at A2 Level in Year 14, but there is very little point in choosing 4 AS Levels if you are going to struggle to cope.

The reality is that most universities still only require 3 A Levels for entry.

Pupils who intend to apply for high demand courses including Medicine, Veterinary Science, Dentistry, Oxbridge and other courses at more competitive universities will be advised to take 4 AS Levels, providing

their GCSE profile suggests that they have the aptitude to do so.

The majority of degree courses at Irish Universities (CAO) would require 4 AS Levels.

If you decide to study a collaborative course through SERC, then you will only study 3 subjects in total.

Pupils should only select 4 AS subjects if they intend to complete the course for the entire year. In the event a pupil wishes to drop a subject, this should be done in consultation with subject, Senior School and Careers staff and only after the October half term break.

Criteria for Entry into Senior School

General School Record

- Each applicant must have demonstrated a positive attitude to the School and to their work, and must also have achieved a minimum overall attendance of 90% (in normal circumstances) up to the start of Study Leave in Year 12.
- Where subjects are oversubscribed, selection will be based on marks achieved at GCSE Level in that subject and/or a pupil's overall performance.
- Pupils may be disqualified from entry into Senior School if general adherence to School rules has been an issue. Entries in the Behaviour Management System and subsequent detentions may result in a pupil not being given a place.

External Applications

Glenlola Collegiate School welcomes applications for entry into Senior School from students from other schools.

The following admissions criteria apply:

- 1. Academic Profile:** External applicants will be required to meet the minimum criteria.
 - 2. General School Record:** A general report or reference will be required to satisfy criteria.
- In the case of applicants from other post-primary schools a general report or reference will be required in addition to the criteria set out above. This report must include a summary of the pupil's academic and attendance records as well as commenting upon their general behaviour.
 - Applications from external applicants will be considered, with admissions dependent on the number of existing pupils progressing to Years 13 and 14.

Entry into Year 14

The essential minimum criteria for entry to Year 14 are listed below:

AS Examination Performance

The current points system used by the Universities and Colleges Admission Service (UCAS) is as follows:

A Level grades A*, A, B, C, D and E are worth:

GRADE	POINTS	
	AS	A2
A*	-	56
A	20	48
B	16	40
C	12	32
D	10	24
E	6	16

- Applicants to Year 14 must attain a minimum of **30 AS points** based on the UCAS tariff system.
- For A Level specifications which do not offer the option of an AS cash-in, internal examination results in Year 13 will be graded and the corresponding points will be awarded.
- It is expected that pupils study a minimum of 3 subjects at Glenlola Collegiate in Year 14.
- In cases where the minimum AS points requirement has not been achieved, the opportunity to repeat Year 13 may be offered at the discretion of the Principal where it is believed that it is in the best educational interests of the pupil to do so. This offer may be conditional on a review of subjects studied.
- In addition to achieving 30 AS points, pupils must also have displayed an acceptable attitude and commitment to their Year 13 studies. High levels of attendance as indicated above for Year 12 Entry form part of a pupil's commitment to their work.
- Pupils may not be offered a place in Senior School if effort in studies and/or general adherence to School Rules has been an issue.
- Entries in the Behavioural Management System and subsequent detentions may result in a pupil not being given a place.
- In cases where special circumstances apply, parents should provide medical and/or other reports in support of their application. Please refer to the Admissions Policy for further information.

GCSE Criteria for AS Level Subjects 2026-2027

The essential GCSE criteria for study at AS Level are outlined beside each subject. Other desirable qualifications and aptitudes that would be advantageous, though not essential, are stated where relevant.

Subject	Essential Minimum GCSE Requirement	Desirable GCSE Requirement (Used if Subject is Oversubscribed)
Art	Grade 'B' in Art with evidence of a high level of commitment and motivation demonstrated at GCSE.	Grade 'A' in Art.
Biology	i) Grade A in CCEA Biology with a grade C in Chemistry GCSE OR ii) Grade 'AA' in Double Award Science with grade 'A' in the Biology module. It is HIGHLY recommended that students have studied GCSE Chemistry. If Chemistry is not studied then Grade 'A*' in Biology GCSE is required. Students should have a grade 'B' in both Maths and English at GCSE. Please be aware that some Biology courses at university may require Chemistry to have been studied to GCSE Level.	i) Grade 'A' or 'A*' in Biology with a grade 'B' in Chemistry GCSE OR ii) grade 'A*A' in Double Award Science.
Business Studies	No prerequisite. The pupil's overall performance at GCSE will be applied if oversubscribed.	Grade 'B' in any one of English Language, English Literature, History or Religious Studies.
Chemistry	i) Grade 'A' in Chemistry OR ii) grade 'A*A' in Double Award Science with a grade 'A' mark in the Chemistry module and either grade 'A' in Maths or grade 'B' in Maths plus a grade 'C' in Further Maths.	GCSE Chemistry score of 355 and over and grade 'A' in Mathematics.
Digital Technology	Grade 'B' in Digital Technology or Grade 'A' in Mathematics.	Grade 'A' in Digital Technology and have a good record of being able to meet GCSE coursework deadlines.
English Literature	Grade 'B' in both English Language and English Literature at GCSE Level.	Grade 'A' in both English Language and English Literature at GCSE Level.
French	Grade 'B' in French.	Grade 'A' in French.
Geography	Grade 'B' in Geography.	Grade 'A' in Geography.
Government & Politics	No prerequisite. The pupils' overall performance at GCSE will be applied if oversubscribed.	Grade 'B' in any one of Government and Politics, History, English Language or English Literature.
Health & Social Care	Grade 'C*' in English Language. If oversubscribed academic performance across all GCSE's will be considered.	Priority will be given to those who have obtained at least a 'B' grade in Home Economics and/or a satisfactory attainment level in controlled assessment work at GCSE.
History	Grade 'B' in History.	Grade 'A' in History.
Life and Health Science (Single Award)	i) Grade 'C*' in Biology and Chemistry GCSE higher tier and a grade 'B' in Maths OR ii) grade 'A' in Single Award Science with teacher recommendation and a grade 'B' in Maths OR iii) grade 'BB' in Double Award Science if the Biology and Chemistry modules are of a good 'B' standard. (*Note: This course may not be taken in conjunction with another science A level)	Grade 'B' in Biology and Chemistry and a Grade 'C' in Physics OR ii) grade 'A*' in Single Award Science OR iii) grade 'AA' in Double Award Science and have a good record of being able to meet GCSE deadlines due to the need to independently complete practical investigations.
Mathematics	Grade 'A' in Mathematics with a minimum UMS mark of 345 (having completed modules M4 and M8) or Grade 'A' in Mathematics and at least a grade 'B' in Further Mathematics.	Grade 'A' in Mathematics and grade 'A' or above in Further Mathematics.
Moving Image Arts	No prerequisite.	If the course is oversubscribed then priority will be given to those who have obtained at least a 'B' grade in ICT, Art or Drama and/or a satisfactory attainment level in controlled assessment work at GCSE.
Music	A high Grade 'B' (within 10 marks of a grade A) and at least grade 5 practical by the end of Year 12.	Grade 'A' in GCSE Music and at least grade 5 practical by the end of Year 12.
Nutrition and Food Science	Grade 'B' in HE or grade 'B' in Biology or Chemistry.	Grade 'A' in HE.
Physical Education	Grade 'B' in PE and a 'B' in Science (preferably Biology)	Grade 'A' in PE.
Physics	i) Grade 'A' in Physics OR ii) Grade of 'AA' at Double Award with a high grade 'A' mark in the Physics module, as well as a grade 'A' in Mathematics GCSE and a grade 'A' or a 'B' in Further Mathematics.	Grade 'A' in Mathematics.
Psychology	Grade 'B' in Mathematics and grade 'C' in English and grade 'B' in a Science.	A grade 'B' in any one of English Language or English Literature. Science subject studied at GCSE is Biology or Chemistry.
Religious Studies	Grade 'B' in Religious Studies.	Grade 'A' in Religious Studies.
Sociology	Grade 'B' in any one of English Language, English Literature, History or Religious Studies.	Grade 'A' in any one of English Language, English Literature, History or Religious Studies.
Spanish	Grade 'B' in Spanish.	Grade 'A' in Spanish.
Technology and Design	Grade 'B' in Technology and Design.	Grade 'A' in Technology and Design with a proven track record in meeting coursework deadlines.
Theatre Studies	Grade 'C*' in Drama at GCSE Level.	Grade 'B' in Drama at GCSE Level. Raw mark at GCSE will be applied if oversubscribed.
SERC Courses	All collaborative courses offered through SERC require passes in English Language and Mathematics.	

ART AND DESIGN (CCEA)

The CCEA GCE Art and Design specification develops in-depth knowledge and understanding of art and design through research and practical activities, intellectual capabilities, and independent approaches to learning.

This specification is available at AS and A2. Students can take the AS units plus the A2 units for a full GCE A level qualification.



Course Content

AS Level	A2 Level
In the AS units, you will study:	At A2 Level:
AS 1: Experimental Portfolio Students develop, explore and record ideas.	A2 1: Personal and Critical Investigation (including a 1000-2000 word written investigation)
AS 2: Personal Response Students present a personal outcome in response to the theme.	A2 2: Thematic Outcome Students present an outcome in response to the theme.

Assessment (Including Coursework)

Students may follow a broad pathway through Art, Craft and Design – Combined Studies, or choose from one of three specialisms:

- Photography and Lens-Based Media;
- Three-Dimensional Design; or
- Textiles.

The course has four units: two at AS Level and two at A2:

AS Level	A2 Level
AS 1: Experimental Portfolio Students develop, explore and record ideas. Teachers assess students' work, and CCEA moderate the marks.	A2 1: Personal and Critical Investigation <ul style="list-style-type: none"> • Written and practical work inform each other and are integrated, but are marked separately. Teachers assess the practical investigation, and CCEA moderate the marks. 40% of A2 (24% of A Level) • Written investigation 1000–2000 words – externally assessed. 20% of A2 (12% of A Level)
Weighting: 50% of AS 20% of A Level	Weighting: 60% of A2 (36% of A Level)
AS 2: Personal Response Students present a personal outcome in response to the theme. Students bring this to completion during a 10-hour controlled test. Teachers assess the controlled task, and CCEA moderate their marks.	A2 2: Thematic Outcome Students present an outcome in response to the theme. Students bring this to completion during a 15-hour controlled test. Teachers assess students' work, and CCEA moderate the marks.
Weighting: 50% of AS 20% of A Level	Weighting: 40% of A2 (24% of A Level)

Career Opportunities

Studying Art opens the door to a huge range of exciting creative careers. From designing the clothes we wear and the products we use, to shaping interiors, graphics, theatre sets and digital content. Art and Design skills are at the heart of today's creative industries. An Art qualification is essential for careers such as graphic design, textiles, fashion, interiors, product and jewellery design, ceramics, theatre design, photography and visual display. It also supports pathways into architecture, teaching, museum and gallery roles, media work and freelance illustration. Creative thinkers are in high demand. Art can be the first step towards an inspiring, dynamic and rewarding career.

BIOLOGY (CCEA)

The CCEA GCE Biology specification gives students a deeper knowledge of the organisms that share our planet. They learn about how organisms are built, how they function and how they interact with each other and their surroundings. This specification is available at AS and A2. Students can take the AS units plus the A2 units for a full GCE A level qualification. They can also choose to take the AS course as a stand-alone qualification.



Course Content

AS Level	A2 Level
AS 1: Molecules and Cells Molecules, enzymes, viruses, cells, cell physiology, continuity of cells, tissues and organs AS 2: Organisms and Biodiversity Transport and exchange mechanisms in animals and plants, adaptation in the context of habitat studies, principles of classification and biodiversity AS 3: Practical skills in AS Biology Practical activities which are designed to aid understanding of concepts and processes or to illustrate biological processes AS makes up 40% of the full A Level	A2 1: Physiology, Co-ordination and control, and Ecosystems Homeostasis, immunity, nervous and hormonal control in animals and plants, ecosystems A2 2: Biochemistry, Genetics and Evolutionary Trends Biochemistry of respiration and photosynthesis, genetics, and classification of animals and plants A2 3: Practical Skills in Biology Practical activities which are designed to aid understanding of concepts and processes or to illustrate biological processes. A2 makes up 60% of the full A level

Assessment (Including Coursework)

AS Level	A2 Level
EXAMINATION: AS 1: Molecules and Cells (1hour 30mins) Weighting: 37.5% of AS; 15% of A Level AS 2: Organisms and Biodiversity (1 hour 30 mins) Weighting: 37.5% of AS; 15% of A Level AS 3: Practical Skills in AS Biology (1 hour) Assesses the practical skills developed throughout the AS course in AS 1 and AS 2 Weighting: 25% of AS; 10% of A Level COURSEWORK: <ul style="list-style-type: none"> Assesses the practical skills developed throughout the AS course in AS 1 and AS 2. Students record evidence of completing 7 of the 11 prescribed practical tasks in a lab book. Each task is marked on a scale of 0-3, gaining a maximum of 21 marks from the 7 tasks. Coursework is teacher assessed and moderated by CCEA. 	EXAMINATION: A2 1: Physiology, Co-ordination and control, and Ecosystems (2h hours 15 mins) Weighting: 24% of A Level A2 2: Biochemistry, Genetics and Evolutionary Trends (2h hours 15 mins) Weighting: 24% of A Level A2 3: Practical Skills in Biology (1 hour 15 mins) Weighting: 12% of A Level COURSEWORK: <ul style="list-style-type: none"> Assesses the practical skills developed throughout the AS course in A2 1 and A2 2. Students record evidence of completing 5 of the 8 prescribed practical tasks in a lab book. Each task is marked on a scale of 0-3, gaining a maximum of 15 marks from the 5 tasks. Coursework is teacher assessed and moderated by CCEA.

Career Opportunities

Through following this course, you will develop skills that are valued in Further and Higher Education, including an ability to understand complex processes, analysis, evaluation of practices, problem solving and research, and practical skills such as using a microscope, handling apparatus and fieldwork. Many of these skills are also highly valued in the workplace, where the ability to take on board new concepts quickly and to suggest improvements to established practises can be very useful. The ability to understand data presented in a variety of forms, including text, tables and graphs, is also an important transferable skill which is developed through the study of biology at this level.

Knowledge of biological processes has implications for a wide range of fundamentally important areas, including health, food production, conservation and technology. A qualification in Biology may be a prerequisite for entering medicine, nursing, dentistry, veterinary science, speech and language therapy, pharmacology, physiology, biomedical science, forensic science and agriculture.

BUSINESS STUDIES (CCEA)

The CCEA GCE Business Studies specification provides insight into how organisations meet stakeholders' needs. Students explore businesses' decision-making and risk-taking processes. They develop awareness of organisations' ethical dilemmas and responsibilities.

This specification is available AS and A2. Students can take the AS units plus the A2 units for a full GCE A level qualification. They can also choose to take the AS course as a stand-alone qualification.



Course Content

AS Level	A2 Level
<p>In the AS units you will:</p> <ul style="list-style-type: none"> • Be introduced to the world of business. • Develop an understanding of the importance of quality and gain an appreciation of growing a business through marketing activities and e-business. • Appreciate the importance of human resources and a motivated workforce. • Learn about the importance of financial information and its use in decision-making. 	<p>If you continue to A2 Level you will:</p> <ul style="list-style-type: none"> • Explore business planning and risk management when developing business strategies and develop an appreciation of the role of accounting and financial information in making strategic business decisions. • Gain an understanding of the macroeconomic and global framework that organisations operate in. • Develop an appreciation of how ethics and sustainability affect business decision-making and organisational culture.

Assessment

AS Level	A2 Level
<p>EXTERNAL EXAMINATIONS:</p> <p>AS 1: Introduction to Business One hour 30 minutes long Structured data responses based on two case studies (80 marks)</p> <p>Weighting 50% of AS 20% of A Level</p> <p>AS 2: Growing the Business One hour 30 minutes long Structured data responses based on two case studies (80 marks)</p> <p>Weighting: 50% of AS 20% of A Level</p>	<p>EXTERNAL EXAMINATIONS:</p> <p>A2 1: Strategic Decision Making 2 hours Five compulsory structured data responses based on one case study (90 marks)</p> <p>Weighting 30% of A2</p> <p>A2 2: The Competitive Business Environment 2 hours Six compulsory structured data responses based on one case study (90 marks) This involves analysing problems, evaluating evidence, making proposals for solutions and justifying reasons for proposals suggested.</p> <p>Weighting: 30% of A2</p>

Career Opportunities

There are many different Business related degrees that can be pursued at university. Business related degrees are obviously useful as an entry to the business world in fields such as Accountancy, Marketing, Human Resources, Travel and Tourism, Hospitality, Manufacturing, Retailing, Banking and Business Enterprise.

A Business degree is also a good broad-based multidiscipline degree useful for many careers such as Law, Journalism, Politics and the rapidly growing industry of Digital Technology.

CHEMISTRY (CCEA)

In the AS units, students build on their GCSE learning about physical and inorganic chemistry. They are also introduced to the basic concepts in organic chemistry. Students who continue to A2 develop their AS knowledge and progress to studying higher level concepts, equipping them to learn about analytical chemistry, transition metals, electrochemistry and organic nitrogen chemistry.



This specification is available at AS and A2. Students can take the AS units plus the A2 units for a full GCE A level qualification. They can also choose to take the AS course as a stand-alone qualification.

Course Content

AS Level	A2 Level
<ul style="list-style-type: none"> • Basic Concepts in Physical (multi-step moles calculations) and Inorganic Chemistry (explaining trends on the Periodic Table.) • Further Physical and Inorganic Chemistry and an introduction to Organic Chemistry • Basic Practical Chemistry – based on a series of practicals encountered throughout the year. 	<ul style="list-style-type: none"> • Further Physical and Organic Chemistry – A more in-depth mathematical study of many AS topics. • Analytical, Transition Metals, Electrochemistry and Organic Nitrogen Chemistry • Further Practical Chemistry

Assessment (Including Controlled Assessment)

AS Level	A2 Level
<p>EXAMINATION:</p> <p>Paper 1: External written examination 1 hour 30 minutes Multiple choice and structured questions</p> <p>Paper 2: External written examination 1 hour 30 minutes Multiple choice and structured questions</p> <p>Paper / Assessment 3: Practical booklet A – taken in the laboratory 1 hour 15 minutes Practical booklet B – taken in the examination hall 1 hour 15 minutes</p> <p>Weighting: 100% of AS 40% of A Level</p> <p>COURSEWORK: There is no coursework. There is however a Practical examination.</p>	<p>EXAMINATION:</p> <p>Paper 1: External written examination 2 hours Multiple choice and structured questions</p> <p>Paper 2: External written examination 2 hours Multiple choice and structured questions</p> <p>Paper / Assessment 3: Practical booklet A – taken in the laboratory 1 hour 15 minutes Practical booklet B – taken in the examination hall 1 hour 15 minutes</p> <p>Weighting: 60% of A Level</p> <p>COURSEWORK: There is no coursework. There is however a Practical examination.</p>

Career Opportunities

Studying Chemistry opens the door to a wide range of careers options, both in and out of the laboratory. This is because it provides a knowledge and skills base which is desirable in many occupations. There are endless interesting and rewarding science-based jobs available – these can be in research, outdoors or in other industries you might not have thought of.

As a chemist, you could:

- Fight disease by **discovering and synthesising new medicines.**
- **Protect the environment.**
- **Invent** new products and materials, including cosmetics, paints, food and drink, plastics and much more.
- Solve crime using **forensic analysis.**
- Inspire others through **teaching chemistry.**

An A level in Chemistry is **essential** if you wish to study **Veterinary science, Medicine, Pharmacy or Dentistry.**

DIGITAL TECHNOLOGY (CCEA)

The CCEA GCE Digital Technology specification is for students interested in current and emerging technologies, the impact they have and how to use them effectively.

This specification is available at AS and A2. Students can take the AS units plus the A2 units for a full GCE A level qualification. They can also choose to take the AS course as a stand-alone qualification.



Course Content

AS Level	A2 Level
<p>At AS Level units, you will study:</p> <ul style="list-style-type: none"> • System Development • Software Projects/Issues • Programming Structure/Environment • Data Representation • Hardware Architecture and Software • Application Processing/Systems • Web Applications/Development 	<p>At A2 Level, you will study:</p> <ul style="list-style-type: none"> • Network Resources • Databases • Applications of Digital Technology • Robotics • Legislation • You will also complete a portfolio showing an application development task

Assessment (Including Coursework)

AS Level	A2 Level
<p>EXAMINATION:</p> <p>AS1: Approaches to System Development This unit explores approaches to the development of complex digital technology systems, the key stages in the process and the outputs produced.</p> <p>AS2: Fundamentals of Digital Technology In this unit students develop knowledge and understanding of the fundamentals of any digital technology system, such as data representation, computer architecture, software and the user interface. This also provides a foundation for progression to A2. Each paper is one hour 30 minutes</p> <p>Weighting: AS1: 50% of AS (20% of A Level) AS2: 50% of AS (20% of A Level)</p>	<p>EXAMINATION:</p> <p>A21: Information Systems This unit leads on from AS 2 and provides knowledge and understanding of concepts such as computer networks, databases, mobile technologies, cloud computing, legislation, and moral and ethical issues.</p> <p>The paper is two hours 30 minutes</p> <p>Weighting: 40% of A Level</p> <p>COURSEWORK:</p> <p>A22: Application Development</p> <ul style="list-style-type: none"> • Analyse a problem: Design, develop, test, evaluate and produce user documentation to a real world problem. • You will submit a portfolio showing evidence of the analysis, design, development, testing and evaluation of an application for a specified end user. <p>Internal Assessment</p> <p>Weighting: 20% of A Level</p>

Career Opportunities

In today's technological world, Digital Technology is an important and worthwhile qualification. No matter what you decide to do when you leave school, the chances are that you will use digital systems. All aspects of industrial, commercial, financial, medical and leisure business have a demand for technology literate personnel.

ENGLISH LITERATURE (CCEA)

The CCEA GCE English Literature specification encourages students to be independent, imaginative, critical and analytical readers. It aims to increase their enjoyment of reading across three key genres: prose, poetry and drama. Students also learn how to develop their ability to research, plan and prepare their responses using their own ideas and interests, as well as critical reading.



This specification is available at AS and A2. Students can take the AS units plus the A2 units for a full GCE A level qualification. They can also choose to take the AS course as a stand-alone qualification.

Course Content

AS Level	A2 Level
<p>In the AS units, you will study:</p> <ul style="list-style-type: none"> AS 1: The Study of Poetry 1900–Present and Drama 1900–Present. CCEA Anthology of Robert Frost and Seamus Heaney Tennessee Williams: <i>A Streetcar Named Desire</i> AS 2: The Study of Prose Pre 1900. Mary Shelley: <i>Frankenstein</i> 	<p>In the A2 units, you will study:</p> <ul style="list-style-type: none"> A2 1: Shakespearean Genres <i>King Lear</i> A2 2: The Study of Poetry Pre 1900 and Unseen Poetry Geoffrey Chaucer: <i>The Wife of Bath's Prologue and Tale</i> A selection of unseen poetry A2 3: Internal Assessment Two novels, one of which must have been written post-2000.

Assessment (Including Coursework)

AS Level	A2 Level
<p>EXAMINATION:</p> <p>AS 1: The Study of Poetry 1900–Present and Drama 1900–Present External written examination - 2 hours. Students answer two questions, one from Section A and one from Section B. Section A is open book. Section B is closed book.</p> <p>Weighting: 60% of AS (24% of A Level).</p> <p>AS 2: The Study of Prose Pre 1900 - External written exam - 1 hour. Students answer one question. Closed book.</p> <p>Weighting: 40% of AS (16% of A Level).</p> <p>COURSEWORK:</p> <p>N/A at AS Level.</p>	<p>EXAMINATION:</p> <p>A2 1: Shakespearean Genres External written exam- closed book, extract based - 1 hour 30 minutes. Students answer one question.</p> <p>Weighting: 20% of A Level.</p> <p>A2 2: The Study of Poetry Pre 1900 and Unseen Poetry External written exam- closed book, resource booklet provided - 2 hours. Students answer two questions, one from Section A and the question set in Section B.</p> <p>Weighting: 20% of A Level.</p> <p>COURSEWORK:</p> <p>A2 3: Internal Assessment Students complete a 2500-word essay.</p> <p>Weighting: 20% of A Level. Before the commencement of the A2 course independent, holiday reading and research about the writers, context and the set texts, are compulsory requirements for the successful completion of the A2 course.</p>

Career Opportunities What can I do with a qualification in English Literature?

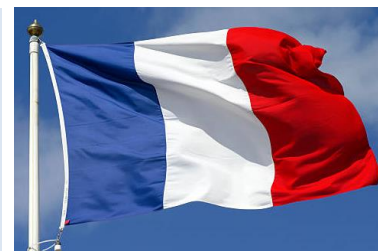
An A Level in English Literature develops your skills in written and face-to-face communication, as well as your capacity for research and your ability to understand complex ideas and theories. With this set of skills, you could go into the media industry which includes print, online, TV and radio.

Journalism or publishing are other areas that an A Level in English Literature will allow you to access, for example, you could be an editorial assistant, proofreading and correcting books before they go to print. A job in advertising and PR is also available with a qualification in English Literature, such as a public relations officer or a press officer.

Teaching is another profession open to you, or you could work for an arts organisation, trying to secure funding or publishing material for a museum or a gallery. With further study, you could also go into sectors like law, business, social work or even politics which all require excellent communication skills.

FRENCH (CCEA)

This aims to develop students' enthusiasm for and understanding of the language and culture in a variety of contexts. Students learn to communicate confidently, clearly and effectively in French for a range of purposes. They also develop knowledge and understanding of themes relating to the society and culture, past and present, of a country or community where French is spoken. This specification is available at AS and A2. Students can take the AS units plus the A2 units for a full GCE A level qualification. They can also choose to take the AS course as a stand-alone qualification.



Course Content

AS Level	A2 Level
In the AS units, you will study: <ul style="list-style-type: none"> The French language The topic of Relationships The topic of Culture and Lifestyle The literary text <i>L'Étranger</i> 	In the A2 units, you will study: <ul style="list-style-type: none"> The French language The topic of Young People in Society The topic of Our Place in a Changing World The literary text <i>Les Mains Sales</i>

Assessment

AS Level (AS: 40% of A Level)	A2 Level (A2: 60% of A Level)
EXAMINATION: AS 1: Speaking Question 1: students give a presentation based on an AS Level theme related to an aspect of a French-speaking country or community (approximately 3 minutes). Question 2: conversation (approximately 8 minutes). Total time: 11 minutes Weighting: 30% of AS Level (12% of A Level) AS 2: Listening (A), Reading (B) and Use of Language (C) Section A: Listening (40 minutes) Students answer 2 sets of questions based on 2 recordings. Recording 1: students answer in French Recording 2: students answer in English Section B: Reading (50 minutes) Question 1: students answer one set of questions in French based on one passage. Question 2: students translate a passage from French into English. Section C: Use of Language (30 minutes) Questions 1, 2, 3, and 4: students complete a series of short grammatical and lexical exercises. Question 5: students translate short sentences from English into French. Total time: 2 hours Weighting: 40% of AS Level (16% of A Level) AS 3: Extended Writing Students write one essay in French in response to a literary text (<i>L'Étranger</i>). Total time: 1 hour Weighting: 30% of AS Level (12% of A Level)	EXAMINATION: A2 1: Speaking Question 1: students introduce and discuss one individual research project based on Belgium. (approximately 6 minutes). Question 2: conversation (approximately 9 minutes). Total time: 15 minutes Weighting: 18% of A Level A2 2: Listening (A) and Reading (B) Section A: Listening (45 minutes) Students answer 2 sets of questions based on two recordings. Recording 1: students answer in French. Recording 2: students answer in English. Section B: Reading (2 hours) Students answer two sets of questions and complete one summary exercise and one translation exercise. Question 1: students complete a gap-filling exercise in French. Question 2: students answer a set of questions in French based on one passage. Question 3: students read a passage in French and summarise it in English. Question 4: students translate a passage from English into French. Total time: 2 hours 45 minutes Weighting: 24% of A Level A2 3: Extended Writing Students write one essay in French in response to a set literary text (<i>Les Mains Sales</i>). Total time: 1 hour Weighting: 18% of A Level

Career Opportunities

Students develop their written and verbal communications skills both in the target language and the mother tongue, as well as their interpersonal and problem-solving skills. They also develop higher order thinking skills, such as analysis, synthesis and evaluation. These skills are suited to careers in the following areas:

- Teaching foreign languages or English as a Foreign Language (TEFL)
- Translating
- Interpreting
- Subtitling
- The Finance Industry
- International Organisations such as the EU Institutions or the UN
- The Public Sector
- Law
- Sales and Marketing
- The Transport, Tourism and Leisure industries

GEOGRAPHY (CCEA)

The CCEA GCE Geography specification gives students a broad knowledge and understanding of the processes and challenges facing our world.

This specification is available at AS and A2. Students can take the AS units plus the A2 units for a full GCE A level qualification. They can also choose to take the AS course as a stand-alone qualification.



Course Content

AS Level	A2 Level
At AS you will study:	At A2 you will study:
Unit 1: Physical Geography	Unit 1: Physical Processes, Landforms and Management
Unit 2: Human Geography	Unit 2: Processes and Issues in Human Geography
Unit 3: Fieldwork Skills and Techniques in Geography (includes 2 day residential fieldtrip)	Unit 3: Decision Making in Geography

Assessment (No Controlled Assessment)

AS Level	A2 Level
EXAMINATION:	EXAMINATION:
Paper 1 (40% of AS, 16% of A level) Fluvial Environments, Ecosystems and Weather and Climate	Paper 1 (24% of A level) Plate Tectonics and Dynamic Coastal Environments
Paper 2 (40% of AS, 16% of A level) Population, Settlement and Development	Paper 2 (24% A level) Planning for Sustainable Settlements and Tourism
Paper 3 (20% of AS, 8% A level) Fieldwork Skills and Techniques in Geography	Paper 3 (12% A level) Decision Making Exercise
Papers 1 and 2 are 1 hour and 15 minutes and Paper 3 is 1 hour	All papers are 1 hour and 30 minutes
Weighting: AS is 40% of A Level Geography	Weighting: A2 is 60% of A Level Geography

Career Opportunities

Geography is one of the most relevant subjects you can study. It explores the connections between people, places, and environments, equipping you to tackle global challenges like **climate change**, **natural disasters**, and **urban sustainability**. As *The Guardian* notes, "In a world that increasingly values people who can work across the physical and social sciences, geography's all the rage." Employers agree: geography graduates are among the most employable, with only **5.8% still seeking work six months after graduation**, compared to an average of **7.3%**.

Why Choose Geography?

- **Interdisciplinary Learning:** Combine science and social understanding.
- **Real-World Relevance:** Apply knowledge to pressing global issues.
- **Transferable Skills:** Critical thinking, data analysis, problem-solving.

Your Future Career

Geography opens doors to careers in **environmental management**, **education**, **transport**, **energy**, **tourism**, and public services—plus skills valued in **business**, **law**, and **finance**.

Geography isn't just about maps—it's about making sense of the world and shaping its future. If you want a subject that's engaging, versatile, and respected by universities and employers, **choose Geography**.

<https://www.prospects.ac.uk/careers-advice/what-can-i-do-with-my-degree/geography>

GOVERNMENT AND POLITICS (CCEA)

The CCEA GCE Government and Politics specification develops critical thinking and skills that employers value, including problem-solving, creative thinking and decision-making. In the AS units, students explore the political systems in Northern Ireland and the rest of the United Kingdom. Students who continue to A2 use their AS skills and knowledge to consider other democratic and non-democratic systems and the best way to govern any society.



This specification is available at AS and A2. Students can take the AS units plus the A2 units for a full GCE A level qualification. They can also choose to take the AS course as a stand-alone qualification.

Course Content

AS Level	A2 Level
In the AS units, you will study: <ul style="list-style-type: none"> • AS1: The Government and Politics of Northern Ireland • AS 2: The British Political Process 	At A2 Level you will study: <ul style="list-style-type: none"> • A21: A Comparative Study of the Government and Politics of the United States of America and the United Kingdom. • A2 2: Option A: Political Power

Assessment

AS Level	A2 Level
EXAMINATION: AS1: External written examination with one source and four questions. 1 hour 15 minutes Weighting: 40% of AS (16% of A Level) AS 2: The External written examination with five questions. 1 hour 45 minutes Weighting: 60% AS Level (24% of A Level)	EXAMINATION: A2 1: External written examination with one source and six questions. 2 hours 15 minutes Weighting: (35% of A level) A2 2: External written examination with one source and five questions. 1 hour 30 minutes Weighting: 25% of A Level

Career Opportunities

Studying Government and Politics helps to develop your critical thinking and communication skills. It provides you with a sound basis for continuing study at further or higher education levels, either in Politics or other subjects. It will enhance skills such as interpreting and managing information, decision-making and problem-solving.

Studying Government and Politics is an excellent preparation for many careers and can open up opportunities for employment in areas such as:

- Charity officer
- Diplomatic Services operational officer
- Forensic accountant
- Civil Service fast streamer
- Government social research officer
- Politician's assistant
- Public affairs consultant
- Public relations account executive
- Human resources officer
- Local government officer
- Market researcher
- Marketing executive
- Newspaper journalist
- Public relations officer
- Social researcher
- Stockbroker

HEALTH AND SOCIAL CARE (CCEA)

This specification appeals to students with an interest in health, well-being and caring for others. It gives students the opportunity to study a diverse range of subjects, including communication, physiology, social policy and psychology, and develop skills including research, investigation, and analysis. This specification is available at AS and A2. Students can take the AS units plus the A2 units for a full GCE A level qualification. They can also choose to take the AS course as a stand-alone qualification.



Course Content

AS Level	A2 Level
<ul style="list-style-type: none"> Promoting Quality Care Communication in Health Social Care and Early years Health and Well being 	<ul style="list-style-type: none"> Public Health and Health Promotion Providing Services Supporting the Family

Assessment (Including Coursework)

AS Level	A2 Level
<p>EXAMINATION: Health and Well-Being – key concepts of health and well-being and the impact of ill health on individuals. Developing knowledge of the needs of a range of service users. Opportunity to investigate how a range of factors may affect health and well-being. In this unit you study the various approaches used in health promotion gaining an understanding of how individuals can take responsibility for their own health and well-being. A number of organisations contribute to health and well-being, and this unit provides you with the opportunity to investigate their role. Understanding of the impact of discrimination on health and well-being will be developed, and you will develop your knowledge of how anti-discriminatory practice may be promoted. Weighting: (50% of AS Level, 20 % of A Level)</p>	<p>EXAMINATION: Providing Services - provision in the health, social care and early years sectors. You learn about how services have developed and how they are structured, regulated and funded. The unit gives you an opportunity to examine how policy and legislation influence the provision of care services. You develop an understanding of the needs of different service user groups and how these needs may be met by a range of services and practitioners Weighting: (30% of A Level)</p>
<p>PORTFOLIO</p> <p>Promoting Quality Care - you produce a report on a health, social care or early years setting that you have experienced investigating how care workers apply the values of care on a daily basis with service users. You also develop an understanding of how legislation impacts on the quality of care delivered in the setting. This unit also focuses on policies, and you will evaluate the effectiveness of policies in promoting quality care in your chosen setting. The latter part of the unit requires you to research an example of poor practice. Weighting: (25% or 10%)</p> <p>Communication in Health, Social Care and Early Years Settings - This unit requires you to produce a report in which you examine communication skills observed in a health, social care or early years setting. You will develop your knowledge of the different types of communication used in these settings and their purpose. In the unit, you also study how a range of factors may support effective communication with service users. You have the opportunity to investigate how barriers to communication with service users can be overcome. Weighting: (25% or 10%)</p>	<p>PORTFOLIO</p> <p>Public Health and Health Promotion - a written report on current public health issues and health promotion strategies. Students will devise, implement and evaluate a health promotion campaign and write up the results. Weighting: (15%)</p> <p>Supporting the Family - This unit provides you with the opportunity to consider the changing family structures in today's society. You also develop an understanding of a range of factors that influence family life and investigate the services available to families and the support they provide. Assessment for this unit requires you to produce a review of family structures and a case study of a family. You are also required to produce a report focusing on the support available to families experiencing issues such as poverty, addiction, bereavement or racism. Weighting: (15%)</p>

Career Opportunities Health and Social Care is relevant to a wide range of sectors

Health Care –Midwife, Nurse, Paediatric Care, Occupational Therapist, Speech & Language therapist, Paramedic, Physiotherapist. **Social Care** - Social Worker, Art therapist, Family Support worker, Residential Care, Disability Support, Youth Offenders Support, Adoption and fostering officer. **Early Years and Education** – Childminder, Nursery teacher, Nursery supervisor, KS1 – KS5 teacher, Classroom assistant, Special Educational Needs Teacher **Community Justice** - Police Officer, Probation Officer, Criminologist, Family Court.

HISTORY (CCEA)

The CCEA GCE History specification develops advanced understanding of how the world became what it is today. It equips students with transferable and written skills, including critical thinking, analysis and debate. This specification is available at AS and A2. Students can take the AS units plus the A2 units for a full GCE A level qualification. They can also choose to take the AS course as a stand-alone qualification.



Course Content

AS Level	A2 Level
<ul style="list-style-type: none"> The history of Germany between 1919 and 1945 including the rise and fall of the Nazis and WW2. The history of Russia between 1917-41 including the causes of the Russian Revolutions, the rise of communism and the rule of Lenin and Stalin. 	<ul style="list-style-type: none"> Clash of Ideologies in Europe 1900–2000 Ireland 1778–1803

Assessment

AS Level	A2 Level
<p>EXAMINATION:</p> <p>AS 1: Historical Investigations and Interpretations External written examination Students answer one short response question and a source-based question with two parts. 1 hour 30 minutes Weighting: 50% of AS (20% of A Level)</p> <p>AS 2: Historical Conflict and Change External written examination. Students answer two questions from a choice of three. 1 hour 30 minutes Weighting: 50% of AS (20% of A Level)</p>	<p>EXAMINATION:</p> <p>A2 1: Change Over Time External written examination Students answer a synoptic essay question. 1 hour Weighting: 20% of A Level</p> <p>A2 2: Historical Investigations and Interpretations External written examination Students answer two source-based questions and one extended essay. 2 hours 30 minutes Weighting: 40% of A Level</p>

Career Opportunities

See <https://www.prospects.ac.uk/careers-advice/what-can-i-do-with-my-degree/history>

Many history degree graduates go on to share their interest in the subject by becoming teachers, at secondary level or within universities. The first of these options usually requires completion of a professional teaching qualification, while the second route often requires completion of studies up to PhD level. Many history careers within universities combine both teaching and research, with faculty members serving as lecturers and tutors while also conducting research in their area of expertise.

Careers in archiving and heritage: Museums, galleries, libraries and other historical archives offer opportunities to pursue history careers in archiving and heritage. These focus on the upkeep and organisation of historical artefacts. History graduates have the potential to excel in these roles due to their knowledge of the importance of history and desire to preserve it. Some roles will be administrative and curatorial and others will be in research, focused on digging deeper into historical knowledge (sometimes literally digging, on archaeological trips) in order to add to the body of knowledge about human heritage. Other related roles include museum curation, genealogy, museum education and archaeology.

Less typical careers in history

Careers in Politics: Within the UK one of the most prominent history graduates is former Prime Minister Gordon Brown. Regardless of your views of Brown's politics, this should prove that history careers can be as high-profile as they come. History and politics are very tightly interwoven and although a 'less typical' career path for history graduates, politics careers are very well-suited to history scholars, especially those focus on analysing key political events, the historical development of governmental systems, and the complex factors involved in political leadership and opposition. Unlike many research and heritage roles, careers in politics will allow you to use your knowledge for political development and change.

Careers in Media: Careers in media can include journalism, writing, editing, broadcasting and all things media-related, with jobs as wide-ranging as TV scheduling or radio DJing. Media roles are surprisingly popular careers for history graduates and this is often due to the role that media plays in disseminating information and news to large audiences.

Careers in business and commerce: Although open to all graduates, careers in business and commerce would suit history graduates with a particular interest and knowledge of how business and capitalism has grown and adapted throughout history, and with ideas about how these markets and systems will continue to grow. For some specialised roles, and to improve your career prospects in this area, you may consider a postgraduate degree in a related subject.

Careers in marketing, advertising and public relations: History graduates are well-known as having strong analytical and communication skills, making them a good match for communications-based roles. Careers in marketing, advertising and PR are suited to history graduates who have specialised in understanding how past events and trends have shaped modern society and culture, preparing them to analyse and predict the behaviour of markets and target audiences in current times.

Careers in Law: History graduates are highly valued within the legal profession due to skills in analytical and critical reasoning. Many roles will require further qualifications but history graduates may be suitable for administration and office roles.

LIFE AND HEALTH SCIENCES (SINGLE AWARD) (CCEA)

This specification was developed with industry in response to the needs of the growing life and health sciences sector in NI. Life and health science related industries make up over 25% of Northern Ireland's total economic output and include a diverse range of public and private businesses and employment opportunities, including pharmaceutical, chemical, agricultural, dental, nursing, environmental and allied health professions.



This specification is available at AS and A2. Students can take the AS units plus the A2 units for a full GCE A level qualification. They can also choose to take the AS course as a stand-alone qualification.

Course Content

AS Level	A2 Level
AS 1: Experimental Techniques Practical experiments designed to develop skills in performing a range of experimental techniques useful in Biology, Chemistry and Physics	A2 1: Scientific Method, Investigation, Analysis and Evaluation Undertake a scientific investigation by carrying out research, communicating results and conclusions and evaluating work
AS 2: Human Body Systems Students learn how human body systems work and the assessments carried out by Healthcare professionals to provide information on disease or health status	A2 2: Organic Chemistry This unit focuses on basic reactions within organic chemistry. Students consider the uses of organic compounds in contributing to an increasing carbon footprint understand how to prepare a simple organic compound and evaluate its purity
AS 3: Aspects of Physical Chemistry in Industrial Processes Students develop skills in performing calculations in chemistry and learn to apply their knowledge of energetics, kinetics and equilibrium in the industrial manufacture of chemicals	A2 3: Genetics, Stem Cell Research and Cloning Students learn about the structure of DNA and how replication links to gene therapy and genetic engineering. They will evaluate the social, ethical and economic implications of modern day uses of genetics
AS makes up 40% of the full A Level	A2 makes up 60% of the full A level

Assessment (Including Coursework)

AS Level	A2 Level
EXAMINATION: AS 1: Experimental Techniques Internal assessment of a portfolio of practical evidence Weighting: 33.34% of AS; 13.34% of A Level	EXAMINATION: A2 1: Scientific Method, Investigation, Analysis and Evaluation Internal assessment of a portfolio of practical evidence Weighting: 20% of A Level
AS 2: Human Body Systems External assessment (1 hour 30 mins) Weighting: 33.33% of AS; 13.33% of A Level	A2 2: Organic Chemistry External assessment (1 hour 45 mins) Weighting: 20% of A Level
AS 3: Aspects of Physical Chemistry in Industrial Processes External assessment (1 hour 30 mins) Weighting: 33.33% of AS; 13.33% of A Level	A2 3: Genetics, Stem cell Research and Cloning External assessment (1 hour 45 mins) Weighting: 20% of A Level
COURSEWORK: <ul style="list-style-type: none"> Complete 12 required practicals to illustrate chemistry skills, biology skills and physics skills Students carry out each investigation, presenting their work in the form of a written report Each investigation is marked out of 20, gaining a maximum of 240 marks from the 12 tasks. Coursework is teacher assessed and moderated by CCEA. 	COURSEWORK: <ul style="list-style-type: none"> Students complete a portfolio of evidence including an essay, plans, a lab book and a report with analysis and evaluation The essay is marked out of 15, plans and lab book out of 20 marks and the report is marked out of 45. There is a maximum of 80 marks for this unit. Coursework is teacher assessed and moderated by CCEA.

Career Opportunities

During this course you will develop competence in a range of practical, mathematical and problem-solving skills that are important in Further and Higher Education and valued in the workplace. In addition, you will develop an understanding of different aspects of science and how they relate to each other. This qualification was developed in partnership with industry to foster essential skills required by this growing sector and is appropriate for entering a range of careers such as biomedical sciences, nutrition, nursing, occupational therapy, speech and language therapy, sports studies, laboratory work or research.

***Please note:** It is not recommended that this subject is taken in conjunction with another A Level in Science.

MATHEMATICS (CCEA)

The CCEA GCE Mathematics specification encourages students to extend their range of mathematical skills and techniques. They use their mathematical knowledge to reason logically and recognise incorrect reasoning. Studying mathematics develops students' analytical, research and problem-solving skills. It provides a firm foundation for scientific, technical, engineering and mathematical careers. It gives students the knowledge and logic they need to solve scientific, mechanical and coding problems.



This specification is available at AS and A2. Students can take the AS units plus the A2 units for a full GCE A level qualification. They can also choose to take the AS course as a stand-alone qualification.

Course Content

AS Level	A2 Level
At AS Level you will cover: <ul style="list-style-type: none"> Unit AS 1: Pure Mathematics Unit AS 2: Applied Mathematics 	At A2 Level you will cover: <ul style="list-style-type: none"> Unit A2 1: Pure Mathematics Unit A2 2: Applied Mathematics

Assessment

AS Level	A2 Level
EXAMINATION: Paper 1: Unit AS 1 The unit is assessed by a 1 hour 45 minute examination Algebra and functions, Coordinate geometry in the (x,y) plane, Sequences and series, Trigonometry, Exponentials and logarithms, Differentiation, Integration and Vectors. Weighting: 60% of AS 24% of A2 Paper 2: Unit AS 2 The unit is assessed by a 1 hour 15 minute examination Section A: Mechanics (50% of assessment) Quantities and units in Mechanics, Kinematics, Forces and Newton's Laws. Section B: Statistics (50% of assessment) Statistical sampling, Data presentation and interpretation, Probability and Statistical distributions. Weighting: 40% of AS 16% of A2 <i>Revised Specification from September 2018</i>	EXAMINATION: Paper 1: Unit A2 1 The unit is assessed by a 2 hour 30 minute examination Algebra and functions, Coordinate Geometry in the (x,y) plane, Sequences and series, Trigonometry, Differentiation, Integration and Numerical Methods Weighting: 36% of A2 Paper 2: Unit A2 2: The unit is assessed by a 1 hour 30 minute examination Section A: Mechanics (50% of assessment) Kinematics, Moments, Impulse and Momentum. Section B: Statistics (50% of assessment) Probability, Statistical distributions, and Statistical hypothesis testing. Weighting: 24% of A2 <i>Revised Specification from September 2018</i>

Career Opportunities

Studying Mathematics will develop skills in logical thinking, identifying problems and creating solutions, critical thinking, self-management and self-evaluation. Both universities and employers value these skills and are keen to attract candidates with Mathematics A Level.

These skills can lead onto studying in further or higher education in a range of areas and potential careers such as a number of engineering opportunities, finance, accountancy, statistics, actuarial science, computer programming, medicine, dentistry and teaching.

MOVING IMAGE ARTS (CCEA)

The CCEA GCE Moving Image Arts specification is unique in the UK, giving students the opportunity to develop and refine their creative, technical and expressive skills as filmmakers and explore and analyse film styles and movements from around the world. Students develop an advanced critical and applied understanding of film language, exploring both formalist and realist styles and techniques taken from a variety of world film movements, practitioners and contexts.



This specification is available at two levels: AS and A2. Students can take the AS units plus the A2 units for a full GCE A level qualification. They can also choose to take the AS course as a stand-alone qualification.

Course Content

AS Level	A2 Level
<p>THEORY You will study the technical process behind film-making and film grammar as well as the key developments in early 20th Century cinema.</p> <p>Part 1 - Hitchcock and the Classical Hollywood Style This module introduces the Continuity Style and Auteur Theory through a close study of Hitchcock's films.</p> <p>Part 2 - Formalism and Early European Cinema This module introduces European alternatives to Hollywood cinema and demonstrates how the formalist film movements, German Expressionism and Soviet Montage, influenced the evolution of film style.</p> <p>PRACTICAL You will produce a 3-4 minute short film along with supporting materials.</p>	<p>THEORY You will study the key developments and characteristics of mid-20th Century cinema.</p> <p>Realism: Narrative and Visual Style This module focuses on the concept of realism by exploring how the realist style and narrative conventions of Hollywood cinema were challenged by successive European film movements; Surrealist Cinema, Italian Neo-realism, The Nouvelle Vague and Cinéma Vérité.</p> <p>PRACTICAL You will produce a 4-6 minute short film along with supporting materials.</p>

Assessment (Including Coursework)

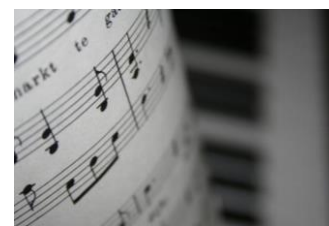
AS Level	A2 Level
<p>EXAMINATION: You will take an online examination which includes recall of your Film History knowledge as well as analysis of previously unseen video clips.</p> <p>Weighting: 40% of AS (16% of total A Level)</p> <p>COURSEWORK: (3- 4 minute film)</p> <p>In response to provided stimuli, students must create a short film or animation and produce a portfolio that documents the creative processes and practices employed in the realisation of their finished work</p> <p>Weighting: 60% of AS (24% of total A Level)</p>	<p>EXAMINATION: You will take an online examination which includes recall of your Film History knowledge as well as analysis of previously unseen video clips.</p> <p>Weighting: 40% of A2 (24% of total A Level)</p> <p>COURSEWORK: (4-6 minute film)</p> <p>Students must produce a complete film or animation which explores the visual language and techniques of the moving image within a wider context of art and creativity. The final product must be supported by an advanced research portfolio that includes an illustrated essay.</p> <p>Weighting: 60% of A2 (36% of total A Level)</p>

Career Opportunities

This subject has been developed in the context of both the wider creative industries and the emerging but dynamic local Film and Television production scene. Apart from being an enjoyable experience with many skills which are transferable to other careers areas, the study of Moving Image Arts is appropriate for a range of careers and entrepreneurial opportunities within the creative industries. This would include the many diverse roles within Film, TV, Advertising, Games development, Mobile App development and Animation. It is also important to recognise that there are many emerging creative technologies with as-yet undefined career opportunities which are based on the moving image.

MUSIC (CCEA)

The CCEA GCE Music specification allows students to create and perform music which expresses their own interests and style. In the AS units, they study music from the Renaissance, Baroque, Classical and Romantic periods right through to popular musicals and sacred vocal styles. Students who continue to A2 will get to explore, in greater depth, the orchestral music of the twentieth century alongside secular and sacred vocal music spanning over 400 years.



This specification is available at two levels: AS and A2. Students can take the AS units plus the A2 units for a full GCE A level qualification. They can also choose to take the AS course as a stand-alone qualification.

Course Content

AS Level	A2 Level
<p>In the AS units, you will study:</p> <p>3 Units:</p> <ul style="list-style-type: none"> • solo performance lasting 5-7 minutes, of grade 5 and above, plus a viva – 32.5% of AS • composition lasting 1 ½ - 2 ½ minutes – 32.5% • two written papers based on three areas of study, each with four set works – 35% 	<p>In the A2 units, you will study:</p> <p>3 Units:</p> <ul style="list-style-type: none"> • solo performance lasting 8-10 minutes, of grade 6 and above, plus a viva – 19.5% of AS • composition lasting 2-3 minutes – 19.5% • two written papers based on three areas of study, each with four set works – 21%

Assessment (Including Coursework)

AS Level	A2 Level
<p>EXAMINATION:</p> <p>Exam is one listening paper and one written paper, including two extended writing questions.</p> <p>COURSEWORK:</p> <p>Coursework is composition. Internally assessed and externally moderated.</p>	<p>EXAMINATION:</p> <p>Exam is one listening paper and one written paper, including two extended writing questions.</p> <p>COURSEWORK:</p> <p>Coursework is composition. Internally assessed and externally moderated.</p>

Career Opportunities

<ul style="list-style-type: none"> • Video game composer • Stage management • Broadcast engineer • Music teacher • Mixing engineer • Session musician • Composer • Accompanist • Audio engineer • Music tutor 	<ul style="list-style-type: none"> • Front of house engineer • Sound recorders • Fundraiser / development assistant • Radio DJ- musicologist • Web designer • Business management • Publicist • Arranger • Music therapist • Sound / acoustic engineer 	<ul style="list-style-type: none"> • Music agent • Music librarian • Music journalist / critic • Event planner • Cruise ship performer • Concert promoter • Website copywriter • Commercial jingle composer • Licensing administrator • Blogger 	<ul style="list-style-type: none"> • Pit musician • Record producer • Music education administrator • Orchestral musician • Music / entertainment attorney • Arts administrator • Military band performer • Conductor
---	--	---	---

NUTRITION AND FOOD SCIENCE (CCEA)

The CCEA GCE Nutrition and Food Science specification focuses on good nutrition as an important part of leading a healthy lifestyle. Eating healthy food can help to reduce the risk of chronic illness and promote overall health.

This specification is available at AS and A2. Students can take the AS units plus the A2 units for a full GCE A level qualification. They can also choose to take the AS course as a stand-alone qualification.



Course Content

AS Level	A2 Level
<p>You will explore:</p> <ul style="list-style-type: none"> the principles of nutrition and its importance to human health; and dietary-related disorders and how they impact on health 	<p>You will explore:</p> <ul style="list-style-type: none"> Issues affecting our food supply, how they impact upon the environment and the ethical implications You will also select an area of personal interest to study further for your research project

Assessment (Including Coursework)

AS Level	A2 Level
<p>EXAMINATIONS: 2x 1 hour 30 minute papers on:</p> <p><u>Principles of Nutrition:</u> You will study macronutrients and micronutrients and other dietary constituents:</p> <ul style="list-style-type: none"> protein fat carbohydrate vitamins mineral; and water and other fluids. <p>Weighting: (50% of AS; 20% of A Level)</p> <p><u>Diet, Lifestyle and Health:</u> You will study current research in relation to diet, lifestyle and health:</p> <ul style="list-style-type: none"> eating patterns; energy and energy balance; diet-related disorders; alcohol; and physical activity <p>Weighting: (50% of AS; 20% of A Level)</p> <p>COURSEWORK: None</p>	<p>EXAMINATION: 2 hour 30 minutes</p> <p>You will answer a compulsory structured question in Section A and three extended writing questions from a choice of four in Section B.</p> <p><u>Food Security and Sustainability:</u> -You will study consumer behaviour in relation to food purchasing decisions and consider issues and implications of food choice:</p> <ul style="list-style-type: none"> food security; food poverty; food sustainability; food waste; and changing consumer behaviour <p>Weighting (30% of A Level)</p> <p>COURSEWORK: <u>Research Project</u> Internal assessment You will complete a 4000-word research-based project. Your teacher will mark the project and CCEA will moderate the results</p> <p>Weighting: (30% of A Level)</p>

Career Opportunities

There are numerous job opportunities in the diverse nutrition and food science sector and associated fields such as: Dietetics, Human Nutrition, Food Design and Nutrition, Food Product Development, Food Management and Marketing, Food Manufacturing, Environmental Health, Food Science and Technology, Consumer Business Management, Teaching, Sports Studies, Nursing, Occupational Therapy, Physiotherapy, Radiotherapy.

PHYSICAL EDUCATION (WJEC)

The WJEC Physical Education specification has been designed to allow learners to develop an appreciation of physical education in a wide range of contexts. It is designed to integrate theory and practice with an emphasis on the application of theoretical knowledge.

This specification is available at AS and A2. Students can take the AS units plus the A2 units for a full GCE A level qualification.



Course Content

AS Level	A2 Level
In the AS units, you will study: A coherent combination of four areas of study: <ol style="list-style-type: none"> 1. Exercise physiology, performance analysis and training 2. Sport psychology 3. Skill acquisition 4. Sport and society You will also complete coursework on improving personal performance in your main sport.	At A2 Level you will: A coherent combination of four areas of study: <ol style="list-style-type: none"> 1. Exercise physiology, performance analysis and training 2. Sport psychology 3. Skill acquisition 4. Sport and society You will also complete coursework on refining personal performance in your main sport.

Assessment (Including Coursework)

AS Level	A2 Level
EXAMINATION: One written examination Exploring Physical education Contextualised questions to include multiple choice, data response, short and extended answers Written examination: one hour 45 minutes Weighting: 60% of AS 24% of A Level COURSEWORK: Improving Personal Performance in Physical Education To assess: <ul style="list-style-type: none"> • Practical performance in one activity as a player/performer • Practical performance as a coach or official in the same sport you are playing/performing in. • Personal Performance Profile Weighting: 40% of AS 16% of A Level	EXAMINATION: One written examination Evaluating Physical Education A range of questions to include data response, short and extended answers Written examination: two hours Weighting: 36% of A Level COURSEWORK: Refining Personal Performance in Physical Education To assess: <ul style="list-style-type: none"> • Practical performance in one activity as a player/performer, coach or official • Investigative Research Weighting: 24% of A Level

Career Opportunities

Studying Physical Education will develop communication and social skills, improve skills in identifying problems and creating solutions, critical thinking and self-evaluation. These skills can lead onto studying in further or higher education in a range of areas and potential careers such as a Sports Scientist, PE teacher, Physiotherapist, Professional sports person, Sports coach/consultant, Sports policy at local and national level, Diet and fitness instructor or a Personal trainer.

These are only some of the many fields open to Physical Education students.

PHYSICS (CCEA)

The CCEA GCE Physics specification encourages students to develop their enthusiasm for the subject and an interest in further studies and careers in Physics. Students develop essential knowledge and understanding of different areas of physics and how they relate to each other.

This specification is available at AS and A2. Students can take the AS units plus the A2 units for a full GCE A level qualification. They can also choose to take the AS course as a stand-alone qualification.



Course Content

AS Level	A2 Level
<p>At AS Level you will study:</p> <p>AS 1: Forces, Energy and Electricity Investigates physical quantities and scalars and vectors, which are required in all branches of the subject. Students explore Newtonian mechanics and electricity.</p> <p>AS 2: Waves, Photons and Astronomy Examines ideas about waves and introduces quantum theory and the concept of wave-particle duality.</p> <p>AS 3: Practical Techniques and Data Analysis Gives students the opportunity to develop practical techniques, including analysis, evaluation, design and communication.</p>	<p>At A2 Level you will study:</p> <p>A2 1: Deformation of Solids, Thermal Physics, Circular Motion, Oscillations and Atomic and Nuclear Physics Builds on the mechanics foundation in Unit AS 1. Thermal Physics connects the properties of gases to the basic principles of kinetic theory.</p> <p>A2 2: Fields, Capacitors and Particle Physics Shows students how action-at-a-distance forces arise between bodies that are separated from one another.</p> <p>A2 3: Practical Techniques and Data Analysis Builds students' essential practical techniques.</p>

Assessment (Including Practical Exam)

AS Level	A2 Level
<p>EXAMINATION: AS 1 and AS 2</p> <p>Each module has an externally assessed written paper (1 hour 45 minutes long) consisting of compulsory short answer questions and some that require extended writing.</p> <p>PRACTICAL:</p> <p>AS 3: Practical Techniques and Data Analysis 1-hour practical exam and 1-hour written paper</p> <p>Students complete an externally assessed test of practical skills consisting of four short tasks, and a separate paper requiring the analysis of experimental results.</p>	<p>EXAMINATION: A2 1 and A2 2</p> <p>Each module has an externally assessed written paper (2 hours long) consisting of compulsory short answer questions and some that require extended writing. The questions have elements of synoptic assessment, drawing together different strands of the specification.</p> <p>PRACTICAL:</p> <p>A2 3: Practical Techniques and Data Analysis 1-hour practical exam and 1-hour written paper</p> <p>Students complete an externally assessed test of practical skills consisting of two tasks, and a separate paper requiring the analysis of experimental results.</p>

Career Opportunities

As well as learning about how the universe works, you'll get a broad training in skills that all employers value – an ability to grasp concepts quickly, a determination to find coherent answers, not to mention problem-solving, analytical and mathematical skills.

Even if you don't end up working in a Physics-related industry, these skills are still highly regarded. Studying Physics is an excellent way of keeping your options open and earning a good salary.

An A Level in Physics opens doors to many wide and varied career options: in medicine, engineering, sciences, research, teaching, nursing, dentistry, veterinary science, software programming, technology, forensic science and others.

PSYCHOLOGY (AQA)

This qualification offers an engaging and effective introduction to Psychology. Subject content includes, Social influence, Memory, Attachment, Psychopathology, Approaches in Psychology, Biopsychology, Research methods and Issues and debates in Psychology. Topics including Forensic Psychology, Schizophrenia and Relationships are also studied. This qualification is linear. This means that students will sit all the AS exams at the end of their AS course and all the A-level exams at the end of their A-level course.



Course Content

AS Level	A Level
<p>In the AS units, you will study:</p> <ul style="list-style-type: none"> • Early attachment - including animal studies and the effects of early attachment on adult relationships • Memory - including why we forget & eye witness testimony • Research Methods e.g. self report methods, experiments • Obedience, conformity and social change • Psychopathology – phobias, depression, OCD and their treatments • Approaches in Psychology- biological, learning and cognitive including their origins 	<p>Students will be re-assessed on all AS topics plus additional material on:</p> <ul style="list-style-type: none"> • Forensic Psychology • Schizophrenia • Relationships • Issues and debates in Psychology • Research Methods e.g. data analysis and statistical testing; • Biopsychology

Assessment

AS Level (1 year option): 100% examination based assessment	A Level (2 years option): 100% examination based assessment
<p>EXAMINATION:</p> <p>1. Introductory Topics in Psychology (1hour 30 minutes) 2. Psychology in Context (1hour 30 minutes)</p> <p>Each of these 2 papers constitutes 50% of AS grade</p>	<p>EXAMINATION:</p> <p>1. Introductory Topics in Psychology (2 hours) 2. Psychology in Context (2 hours) 3. Issues and Options in Psychology (2 hours)</p> <p>Each of these 3 papers constitutes 33.3% of A Level grade</p>

SKILLS FOR SUCCESS IN PSYCHOLOGY

- Essay writing skills
- Sound mathematical skills and thinking
- Description and explanation
- Analysis
- Being able to see and explain something from different perspectives/ viewpoints
- Elaboration and developing a clear, rational line of argument
- Planning & carrying out research in a logical way
- Interpreting the results of research
- Application/ use of knowledge to real life scenarios

Career Opportunities

Studying Psychology can lead onto studying in further or higher education in a range of areas and potential careers such as:

- | | | |
|----------------------------|-----------------------------|---------------------------|
| • Educational Psychologist | • Researcher | • Teacher |
| • Counsellor or therapist | • Nurse | • Health Promotion Work |
| • Forensic Psychologist | • Social Worker | • Addictions |
| • Sports Psychologist | • Health Psychologist | • Youth/community worker |
| • Clinical Psychologist | • Occupational Psychologist | Marketing and advertising |
| Neuropsychologist | • Business and Marketing | |

RELIGIOUS STUDIES (CCEA)

The CCEA GCE Religious Studies specification offers an academic approach to the study of religion, ethics and philosophy. It gives students opportunities to develop their knowledge and understanding of religion.

This specification is available at AS and A2. Students can take the AS units plus the A2 units for a full GCE A level qualification. They can also choose to take the AS course as a stand-alone qualification.



Course Content

AS Level	A2 Level
At AS level you will study: <ul style="list-style-type: none"> • Textual study: An introduction to the Acts of the Apostles • Systematic study of one religion: An Introduction to Islam 	At A2 level you will study: <ul style="list-style-type: none"> • Textual study: Themes in Selected Letters of St Paul; • Systematic study of one religion: Islam in a contemporary context

Assessment (There is NO coursework in R.S.)

There are two assessment objectives for this specification. To enable candidates to:

- demonstrate knowledge and understanding of religion, including:
 - religious, philosophical and/or ethical thought and teaching;
 - influence of beliefs, teachings and practices on individuals, communities and societies;
 - cause and significance of similarities and differences in belief, teaching and practice; and
 - approaches to the study of religion and belief and
- analyse and evaluate aspects of, and approaches to, religion and belief, including their significance and influence.

AS Level	A2 Level
EXAMINATION: <p>There are 2 externally assessed examination papers:</p> <ul style="list-style-type: none"> • Unit 2: The Acts of the Apostles (1 hour 20 minutes) • Unit 6: An Introduction to Islam (1 hour 20 minutes) <p>The AS paper includes a human experience element where students make connections across faiths and through history.</p> <p>Weighting:</p> <ul style="list-style-type: none"> • AS is worth 40% of the A Level • Each paper is worth 50% of the AS unit 	EXAMINATION: <p>There are 2 externally assessed examination papers:</p> <ul style="list-style-type: none"> • Unit 2: Themes in Selected Letters of St Paul (2 hours) • Unit 6: Islam in a contemporary context (2 hours). <p>The A2 unit also includes a synoptic element where an evaluation of the common strands between the two units is assessed.</p> <p>Weighting:</p> <ul style="list-style-type: none"> • A2 is worth 60% of the A Level • Each paper is worth 50% of the A2 unit

Career Opportunities

The emphasis in Religious Studies is very much on developing skills-to describe, explain and critically analyse using knowledge and understanding; also, the use of evidence and reasoned argument to express and evaluate personal opinions, informed insights and differing opinions.

These are important life skills and will be used in most career areas but are particularly relevant in teaching, social work, nursing, charity or personnel work, advocacy or legal courses.

SOCIOLOGY (WJEC)

The WJEC Sociology specification provides learners with the opportunity to develop an understanding of our changing society as well as opportunities to learn about sociological methods and research.

This specification is available at AS and A2. Students can take the AS units plus the A2 units for a full GCE A level qualification. They can also choose to take the AS course as a stand-alone qualification.



Course Content

AS Level	A2 Level
<p>In the AS units, you will study:</p> <ul style="list-style-type: none"> • AS Unit 1: Acquiring Culture You will learn about key concepts and processes of cultural transmission, socialisation and the acquisition of identity. You will also learn about Families and Households • AS Unit 2: Understanding Society and Methods of Sociological Enquiry You will learn about Research Methods and Education. 	<p>At A2 Level you will study:</p> <ul style="list-style-type: none"> • A2 Unit 3: Power and Control You will learn about key concepts related to Crime and Deviance. • A2 Unit 4: Social Inequality and Applied Methods of Sociological Enquiry You will learn about key concepts related to Social Inequality and Research Methods.

Assessment

AS Level	A2 Level
<p>EXAMINATIONS: 2 papers</p> <ul style="list-style-type: none"> • Paper 1: AS Unit 1: Acquiring Culture 1 hour 15 minutes written exam 60 marks <p>Weighting: 38% of AS (15% of qualification)</p> <p>Paper 2: AS Unit 2: Understanding Society and Methods of Sociological Enquiry 2 hours written exam 60 marks</p> <p>Weighting: 62% of AS (25% of qualification)</p>	<p>EXAMINATIONS: 2 papers</p> <ul style="list-style-type: none"> • Paper 1: A2 Unit 3: Power and Control 2 hour written exam 70 marks <p>Weighting: 25% of qualification</p> <ul style="list-style-type: none"> • Paper 2: A2 Unit 4: Social Inequality and Applied Methods of Sociological Enquiry 2 hours 15 minutes written exam 100 marks <p>Weighting: 35% of qualification</p>

Career Opportunities

Sociology is a great choice of subject for people who want a career in social work, nursing or medicine. But the subject is also useful in a number of other careers, like marketing, advertising, PR, journalism, law or teaching.

Possible degree options: According to bestcourse4me.com, the top six degree courses taken by students who have an A Level in Sociology are:

- | | |
|-------------------|------------|
| • Sociology | • Business |
| • Psychology | • Law |
| • English studies | • Teaching |

SPANISH (CCEA)

The CCEA GCE Spanish specification aims to develop students' enthusiasm for and understanding of the language and culture in a variety of contexts. Students learn to communicate confidently, clearly and effectively in Spanish for a range of purposes. They also develop knowledge and understanding of themes relating to the society and culture, past and present, of a country or community where Spanish is spoken.



This specification is available at AS and A2. Students can take the AS units plus the A2 units for a full GCE A level qualification. They can also choose to take the AS course as a stand-alone qualification.

Course Content

AS Level	A2 Level
<p>At AS level you will: Develop a knowledge and understanding of themes relating to the society and culture, past and present of a country where the Spanish language is spoken.</p> <p>You will study the following themes- 1. Relationships 2. Culture and Lifestyle</p>	<p>At A2 you will: Build on your knowledge from GCSE and AS by studying the following themes:</p> <ol style="list-style-type: none"> 1. Young people and society 2. Our place in a changing world

Assessment

AS Level	A2 Level
<p>EXAMINATION: AS1: Speaking Consisting of: a. a presentation (based on an AS level theme.) b. a general conversation Total Time: 11 minutes Weighting: 30% of AS / 12% of A Level</p> <p>AS2: (A) Listening- 2 sets of questions: • Set one answered in Spanish • Set two answered in English Total Time: 40 minutes</p> <p>(B) Reading Qu 1: You answer a set of questions in Spanish based on one passage. Qu 2: Translation of a passage from Spanish into English Total Time: 50 minutes</p> <p>(C) Use of Language: this is made up of short grammatical exercises and a translation of short sentences from English into Spanish Total Time: 30 minutes</p> <p>Weighting: Sections A, B and C are worth 40% of AS and 16 % of A Level Total Time: For A, B and C is 2 hours</p> <p>AS3: Extended Writing: You will write an essay in Spanish in response to a set film or Literary text. Total Time: 1 Hour Weighting (AS 3): 30% of AS and 12% of A2</p>	<p>EXAMINATION: A2 1 Speaking: a. You will introduce and discuss a researched project. b. General Conversation Total Time: 15 minutes Weighting: 18% of A Level</p> <p>A2 2: (A) Listening- 2 sets of questions: • Set one – answer in Spanish • Set two – answer in English Total Time: 45 minutes</p> <p>(B) Reading You answer two sets of questions, complete a summary exercise and do a translation from English into Spanish. Total Time: 2 hours 45 minutes Weighting: Sections A and B = 24% of A Level</p> <p>A2 3: Extended Writing You will write one essay in Spanish in response to a set Literary text Total Time: 1 hour Weighting: (A2 3): 18% of A Level</p> <p>Note: AS = 40 % of an A Level A2 = 60 % of an A Level</p>

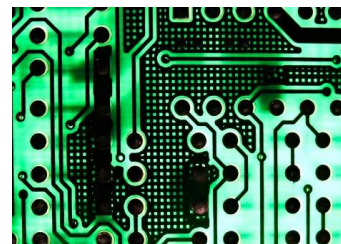
Career Opportunities

Learning Spanish or in fact any language, enhances your skills in Listening, Reading, Writing and Speaking. These will be of great value in a wide range of careers which may or may not be directly linked to the language itself, but which are necessary for many jobs. For more information on possible careers consult the SCILT website or the guide "Talk the Talk" produced by the British Embassy.

TECHNOLOGY AND DESIGN (CCEA)

The CCEA GCE Technology and Design specification encourages students to recognise and overcome challenges and constraints when working towards making high quality products.

- The AS units include a common core of design and materials and a specialised study of systems and control (electronic and microelectronic systems). Students also complete a product development task that is internally assessed.
- Students who continue to A2 explore systems and control (electronic and microelectronic systems). The A2 course includes an internally assessed design-and-make task.



This specification is available at AS and A2. Students can take the AS units plus the A2 units for a full GCE A level qualification. They can also choose to take the AS course as a stand-alone qualification.

Course Content

AS Level	A2 Level
In the AS units, you will study: <ul style="list-style-type: none"> • A common core of 'Design and Materials'. • A specialised study of Electronic and Microelectronic systems. • You will also complete a product development task. 	At A2 Level: <ul style="list-style-type: none"> • You will explore Electronic and Microelectronic systems in greater detail than at AS level. • The A2 course includes a design and make task.

Assessment (Including Coursework)

AS Level	A2 Level
EXAMINATION: Paper 1: Core area of study – Design and Materials Paper 2: Specialist area of study - Electronic and Microelectronic Control Systems Each paper is one hour long. Weighting: 50% of AS 20% of A Level COURSEWORK: Product Development <ul style="list-style-type: none"> • You will produce a design folder and a practical outcome based on the development of an existing product with a view to redesigning either the product or an aspect of it. • You will produce a model which represents the practical outcome of the product analysis and development. You will have the opportunity to use software such as SolidWorks and Computer Aided Manufacture using the department's 3D printer. • You will submit a portfolio of 10 A3 pages. Weighting: 50% of AS 20% of A Level	EXAMINATION: One written examination You will answer two questions on your specialist area of study - Electronic and Microelectronic Control Systems The paper is two hours long. Weighting: 30% of A Level COURSEWORK: Product-System Design and Manufacture <ul style="list-style-type: none"> • In this unit, you will develop and showcase a wide range of technical, design and making skills and capabilities in response to a client-focused, real-world need. • You will design and make a product that includes a technological system. • You will submit a portfolio with the practical component. The portfolio will include written and graphical information produced on 20 A3 pages. Weighting: 30% of A Level

Career Opportunities

Studying Technology and Design will develop skills in identifying problems and creating solutions, developing design ideas, practical skills in hand, machine and CAD/CAM techniques, critical thinking and self-evaluation.

These skills can lead onto studying in further or higher education in a range of areas and potential careers such as a number of Engineering opportunities, Product Development, Product Design, Prosthetics, Architecture, Medical Technology and Graphic Design.

These are only some of the many fields open to Technology and Design students.

THEATRE STUDIES (Pearson Edexcel)

This specification will engage students through encouraging creativity, focusing on practical work which reflects 21st-century theatre practice and developing skills that will support progression to further study of drama and a wide range of other subjects.

This is a 2 year course. Pupils do not have the option of sitting an AS examination nor do they have the option of dropping Theatre Studies during the course of the 2 years.



Pupils should also be aware that the A Level practical assessment is based on performance, where group work is essential.

Course Content

Component 1:

Devising Completed in Year 13

Component 2:

Text in Performance. Started in Year 13 and assessed in Year 14

Component 3:

Theatre Makers in Practice – Written examination (started in Year 13 and examined in Year 14)

Assessment (Including Coursework)

EXAMINATION:

Component 3: Theatre Makers in Practice 40%

Content prepared in Year 13 & 14

2 hours 30 minutes

Three Sections:

Section A: Live Theatre Evaluation

Section B: Questions on a set text.

Section C: Directors' Interpretations.

COURSEWORK:

Component 1: Devising 40% - Completed in Year 13

Students devise a piece of theatre which they then perform. They will record the process in a portfolio. Internally assessed and externally moderated.

Component 2: Text in Performance 20% - started in Year 13 and assessed in Year 14

Group performance from a performance text.

Perform a monologue or duologue from a different text.

External assessment.

Please note: As part of this course, pupils produce 'devised pieces' which draw on the work of recognised theatrical professionals named on the specification and external source material. Some of this material deals with challenging and controversial issues which, taken out of the context of AS Theatre Studies, could be considered to be offensive. In choosing to take this course, pupils and their parents should be aware of this.

Career Opportunities

A-level Drama and Theatre Studies is useful for students considering Higher Education in any arts or humanities subject including English Language and Literature, Journalism, Dance, Music, Art and Design, and Media Studies.

Career opportunities for students who study A-level Drama and Theatre Studies include:

Arts/theatre administration, arts journalism, director, actor, designer, playwright, stage management, theatre management, theatrical agent, technician, broadcasting, media presenting, education, drama therapy and scriptwriting, or any career requiring a high level of communication skills.

Collaborative Courses Offered Through SERC

There may be other subjects available as collaborative courses within the Bangor Learning Partnership (BLP). Please note the following important information about **collaborative courses**.

1. At present, the subjects on offer are Engineering, Hospitality and Sports and Exercise Science. This may be subject to change. Some information on these courses can be found at the bottom of this page.
2. Only a limited number of places will be available for these subjects.
3. **You may access a maximum of 1 course through collaboration and you should only select 3 subjects in total.**

If you select a collaboration course, you should also nominate an alternative subject that is offered in Glenlola Collegiate School. This is indicated on your subject choice form.

PLEASE NOTE: If you nominate and are accepted for any of the collaborative subjects, this may affect the choices available to you at Glenlola. If you are considering studying a collaborative subject you must be aware that there could be some impact on your other AS class time. This is due to the timetables in the collaborative schools and colleges not being fully aligned.

BTEC Level 3 in Engineering

Learners will take a practical, applied engineering course as part of their Level 3 study, which gives them an introduction to the sector. They will be able to combine this with other qualifications, such as a GCE A Level in Mathematics or Physics, which would allow them to progress to higher education to study engineering or other STEM-related programmes. Engineering covers a broad variety of roles and it involves the application of scientific principles and practical knowledge to transform ideas and materials into products and systems safely and support them during their lifetime. Learners taking this qualification will study:



- engineering principles and mathematics
- health and safety, team work, interpreting and creating computer-aided engineering
- drawings
- design and manufacture of products

BTEC Level 3 in Hospitality

Over the past few years, employment in the hospitality industry has increased faster than for the economy overall. But there remain significant skills gaps, particularly in: customer service; interpersonal skills; supervisory skills; finance; and employability skills. These transferable skills will enable students to meet changing circumstances, whether these arise from the shift in their own sphere of employment, promotion to supervisory/management roles or from general changes in business practices and the hospitality environment. Modules studied may include:



- | | | |
|---|----------------------------------|------------------------------|
| • The Hospitality Industry | • European Food | • Food and Drinks Service |
| • Principles of Supervising Customer Care | • Human Resources in Hospitality | • Alcoholic Beverage Service |
| • Providing Customer Services | | |

BTEC Level 3 in Sports and Exercise Science

This course provides students with an opportunity to learn about both the theoretical and practical elements of sport. Everyone taking this qualification will study three mandatory units, covering the following content areas:



- functional anatomy
- applied sport and exercise psychology
- coaching for performance and fitness

The mandatory content allows students to concentrate on the development of their practical skills and the broad knowledge required for entrance to higher education programmes in sport and exercise science. Students take one optional unit from a small range of options, which have been designed to support progression to a variety of sport courses in higher education and to link with relevant occupational areas. In addition to the sport and exercise science sector-specific content, the requirements of the qualification will mean students develop the transferable and higher-order skills that are highly regarded by higher education and employers.



GLENLOLA
COLLEGIATE
SCHOOL
BANGOR

2 Valentine Road
Bangor
BT20 4TH

028 9147 5340
glenlola.collegiate.net